

DMD-1000 Central Control Panel

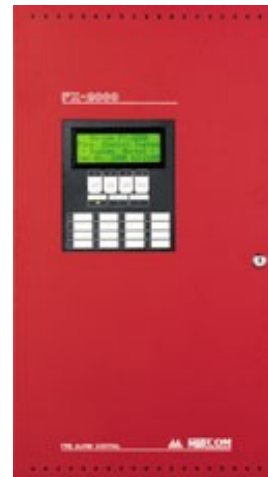
Intelligent control panel with expandable capacity. The SRS Control panel provides Facilities Managers and Security Services all the modern features they need to monitor roof and floor beam deflection on-site, with remote annunciators, and through connection to third party data systems and alarm services.

Standard features include

- Listed to UL 864, 9th edition
- Modular design
- Panel security
- Downloadable event history
- Four Alarm Queues with selector switches and LEDs for Alarm, Supervisory, Monitor, and Trouble.
- Built-in Walk Test operations
- Expandable architecture allows for system expansion

Central Control Panel offers a variety of outputs

- Auxiliary relay contacts for Common Alarm, Common Supervisory, and Common trouble
- RS485 expandable interface
- RU-232 output for remote printer or CRT
- Digital Alarm Transmitter (requires dedicated phone line)
- On site strobes and sirens as required
- Wireless broadcasting available
- On-board battery back up against AC power outage
- Back lite LCD Display
- 16 Zone LED annunciator



Coated steel enclosure mounts directly on wall at on-site security desk or data station.

Back Box hanging dimensions; 14-1/2" wide x 26" tall x 4-1/2" deep

If hanging space is limited, the control box can be mounted in a remote location and connected to a small annunciator panel—contact Safe Roof Systems for complete details.

Power supply connections;

Dedicated 120VAC line enclosed in conduit.

- Input rating: 120VAC, 60Hz / 240VAC, 50Hz
Max current: 6 A to 12 A (depending on system size)
Fuse protection: 20 Amp, 1-1/4" fast acting

